

Comparative Study of Seismic Performance of Building in Term of Fundamental Time Period Having Vertical Geometric Irregularity at Different Floor Levels

Manoj Kumar¹, Sachin Tiwari², Rohit Yadav³

^{1,2,3}Assistant Professor, Department of Civil Engineering, Bundelkhand Institute of Engineering & Technology, Jhansi, Uttar Pradesh., India

Abstract— Nowadays, as in the urban areas the space available for the construction of buildings is limited. So in limited space we have to construct such type of buildings which have can be used for multiple purposes such as lobbies, car parking etc. To fulfill this demand, buildings with irregularities is the only option available. During an earthquake, failure of structure starts at points of weakness. This weakness arises due to discontinuity in mass, stiffness and geometry of structure. Vertical irregularities are one of the major reasons of failures of structures during earthquakes. To study the behavior of the building having vertical geometric irregularity at different floor levels six models have been considered in this project. All the models were analyzed by using SAP 2000. The methods used for the analysis are static method and response spectrum method.

Keywords—Discontinuity, Earthquake, Geometry, Mass, Response Spectrum Method, Stiffness, Static Method, Vertical Irregularity, Vertical Geometric Irregularity.

I. INTRODUCTION

The structures having this discontinuity are termed as Irregular structures. Irregular structures contribute a large portion of urban infrastructure. For example structures with soft storey were the most notable structures which collapsed. So, the effect of vertically irregularities in the seismic performance of structures becomes really important. Height-wise changes in stiffness and mass render the dynamic characteristics of these buildings different from the regular building. As per IS 1893 vertical irregularity in the building structures may be due to irregular distributions in their mass, strength and stiffness along the height of building. When such buildings are constructed in high seismic zones, the analysis and design becomes more complicated. There are various types of irregularities in the buildings depending upon their location and characteristics but mainly, they are divided into two groups—plan irregularities and vertical irregularities. Vertical irregularities are considered and described as follows.

A. Stiffness irregularity

Soft Storey: As per IS 1893-2002, A soft storey is one in which the lateral stiffness is less than 70% of that in the storey above or less than 80% of the average lateral stiffness of the three storeys above.

Extreme Soft Storey: An extreme soft storey is one in which the lateral stiffness is less than 60% of that in the storey above or less than 70% of the average stiffness of the three storeys above.

B. Mass Irregularity

As per IS Code 1893-2002, Mass irregularities are considered to exist where the effective mass of any storey is more than 200% of effective mass of an adjacent storey. A roof that is lighter than the floor below need not be considered. The effective mass is the real mass consisting of the dead weight of the floor plus the actual weight of partition and equipment. Excess mass can lead to increase in lateral inertial forces, reduced ductility of vertical load resisting elements, and increased tendency towards collapse due to P- Δ effect. The central force of gravity is shifted above the base in the case of heavy masses in upper floors resulting in large bending moments.

C. Vertical geometric irregularity

As per IS 1893-2002, Geometric irregularity exists, when the horizontal dimension of the lateral force resisting system in any storey is more than 150% of that in an adjacent storey. The setback can also be visualized as a vertical re-entrant corner.

D. Discontinuity in Capacity-Weak Storey

As per IS 1893-2002, A weak storey is one in which the storey lateral strength is less than 80% of that in the storey above. The storey lateral strength is the total strength of all seismic force resisting elements sharing the storey shear in the considered direction.

II. STRUCTURAL MODELLING

To study the seismic behavior of the building with different irregularities at different floor levels, six 3-dimensional analytical models are considered in this study. Studies are conducted on these five models. Out of six models one is basic model, other contains five models having vertical geometric irregularity at different storey levels.

A. Description of structure

Table 1
Showing Building description

Live load	3 kN/m ²
Density of concrete	25 kN/m ³
Thickness of slab	150 mm
Depth of beam	500 mm
Width of beam	500 mm
Dimension of column	500 x 500 mm
Thickness of outside wall	230 mm
Thickness of inner side wall	150 mm
Height of floor	3.5 m
Earthquake zone	IV
Damping ratio	5%
Type of soil	II
Type of structure	Special moment resisting frame
Response reduction factor	5
Importance factor	1
Roof treatment	1 kN/m ²
Floor finishing	1 kN/m ²

The loads from the walls are distributed as uniformly distributed load on the beams of the respective storeys. The slab load is distributed in the beams of the respective storeys as trapezoidal and triangular loads.

B. Description of Structure Modelling

To model and simulate the structure in geometry and behaviour to ensure the modelled structure is as close to the real one as possible. Modelling is done in such a way so that there is ideal distribution of mass, stiffness and strength of the structure.

The modelling of the material properties and geometric modelling of the structure is given as follows:

Material Properties:

Different materials are used in the structural modelling of the building. The grade of concrete and reinforcement used in the study of the models is taken as M 25 and Fe 415. The elastic properties of these materials are taken as per the IS 456:2000. As per clause 6.3.2.1 of the IS 456:2000 the modulus of elasticity of concrete is taken as:

$$E_C = 5000\sqrt{f_{ck}} \text{ N / mm}^2$$

Where f_{ck} is the characteristic compressive strength of the concrete in N/mm² at 28 days. For present study value of f_{ck} is 25. For the reinforcement, the yield stress (f_y) and modulus of elasticity (E_s) is taken as per IS 456:2000.

Table 2
Showing material properties

Material	Concrete	Steel
Grade	M 25	Fe 415
Mass Density	2549.3	7849
Unit Weight	25	76.97
Modulus of	25,000,00	20,000,000
Poisson's Ratio	0.15	0.3

Structural Element Modelling:

The following are the main modelling assumptions used in this study:

Rigid Slab: It is assumed that all the frames in the buildings are connected by floor diaphragms that are rigid in their own plane. Therefore every floor has only two translational and one rotational degree of freedom. The in-plane displacements of all the nodes on the floor are constrained by these degrees of freedom. However, the nodes can have independent vertical displacements. The gravity loads from the slabs are distributed as triangular and trapezoidal line loads on the supporting beams.

Fixed base: The frames of building are assumed to be fixed at their base on an infinitely rigid foundation. No soil-structure interaction effect is considered in this study.

Design Spectrum: Design spectra are not uneven curves since they are intended to be the average of many earthquakes. An idealized design spectrum of earthquake ground motions is applied at the base of the buildings as per IS 1893:2002 (Part 1).

Due to the fixed base assumption, all supports are assumed to move in phase. No vertical ground motion components are applied to the buildings.

Beam-Column joints: The beam column joints are modelled by giving end-offsets at the joints. A rigid zone factor of 1.0 was taken to ensure rigid connections of the components. In other words, it is assumed that the beam column joints are designed such that joint deformation is negligible.

Lateral load resisting system: Lateral load resisting system must be of closed loops, so that it is able to transfer all the forces acting either vertically or horizontally to the ground. Table No. 7 of IS1893:2002 (Part 1) lists the different framing systems and response reduction factor (R). A low value of 'R' indicates an extremely earthquake prone building i.e., unreinforced masonry wall building, which is having a 'R' value of 1.5 and a high value of 'R' indicates an earthquake-resistant type building like moment resisting reinforced concrete frame buildings. In this system the members and the joints of frame are resisting the earthquake forces, primarily by flexure. This system is generally preferred by design engineers. Hence, a special moment resisting frame which is having an 'R' value of 5 has been considered here for present study.

Lumped mass at floor level: The mass of the building assumed to be lumped at the floor levels.

Frame Members: There are different analytical models available to simulate structural frames. In this research a beam element and a column element are used to model the elements of the frames in the buildings. The beams as well as columns of the frames are modelled by 3D frame elements. All the beam-column joints are assumed to be rigid. Using SAP 2000 the beams and columns in the present study are modelled as frame elements with the centerlines joined at nodes.

C. Model Nomenclature and Structure Models

Each model in this study is named according to the type of irregularity and floor level at which irregularity exists. Model name MI 1 refers to the model in which mass irregularity is at first floor. MI B refers to basic model for mass irregularity. The detailed nomenclature for the frame models considered is as under in table:

Table 3
Showing nomenclature of the different models

Reference Frame	GI B
Model with Vertical geometric irregularity at first floor	GI 1
Model with Vertical geometric irregularity at second floor	GI 2
Model with Vertical geometric irregularity at third floor	GI 3
Model with Vertical geometric irregularity at fourth floor	GI 4
Model with Vertical geometric irregularity at fifth floor	GI 5

The various models which have been analyzed are shown below. The red coloured portion shows the vertical geometric irregularity at that particular floor.

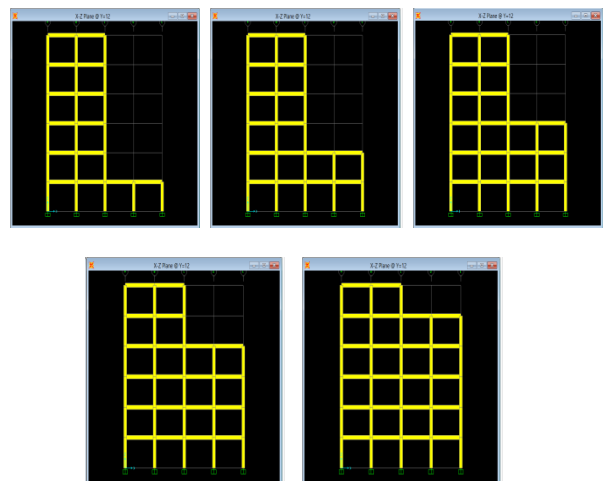


Fig. Model GI 1 to GI 5

D. Method of Analysis

Static Analysis:

Today various methods of the seismic analyses are available to evaluate the seismic performance of the framed structures. Broadly they are classified as static analysis and dynamics analysis. Further they are classified as the linear and nonlinear analysis. In the present work only static analysis is performed on the models.

Static analysis is a linear type of analysis. This method defines a way to represent the effect of earthquake, when series of forces are applied on a building, through a seismic design response spectrum. To account for effects due to yielding of the structure, many codes apply modification factors that reduce the design forces. In the equivalent static method, the lateral force equivalent to the design basis earthquake is applied statically. The equivalent lateral forces at each floor are applied at the design centre of mass. For different types of soil conditions the values of response spectra can be calculated as per IS 1893:2002 as under:

For rocky, or hard soil sites

$$\frac{S_a}{g} = \begin{cases} 1+15T & 0.00 \leq T \leq 0.10 \\ 2.50 & 0.10 \leq T \leq 0.40 \\ 1.00/T & 0.40 \leq T \leq 4.00 \end{cases}$$

For medium soil sites

$$\frac{S_a}{g} = \begin{cases} 1+15T & 0.00 \leq T \leq 0.10 \\ 2.50 & 0.10 \leq T \leq 0.55 \\ 1.36/T & 0.55 \leq T \leq 4.00 \end{cases}$$

For soft soil sites

$$\frac{S_a}{g} = \begin{cases} 1+15T & 0.00 \leq T \leq 0.10 \\ 2.50 & 0.10 \leq T \leq 0.67 \\ 1.67/T & 0.67 \leq T \leq 4.00 \end{cases}$$

The fundamental natural time period of vibration (T_a) in seconds, of a moment resisting frame structures is given by the empirical expression as per clause 7.6 of IS 1893:2002

$$\begin{aligned} T_a &= 0.075 h^{0.75} && \text{for RC frame building} \\ &= 0.085 h^{0.75} && \text{for steel frame building} \\ &= \frac{0.09h}{\sqrt{d}} && \text{for all structures with infill} \end{aligned}$$

Where, h= height of the building in m, d= base dimensions of the building at the plinth level, in m, along the considered direction of the lateral force.

In the present work medium soil condition has been chosen. Response spectra for 5% damping for soil condition medium as per IS 1893:2002 is given in fig 3.17.

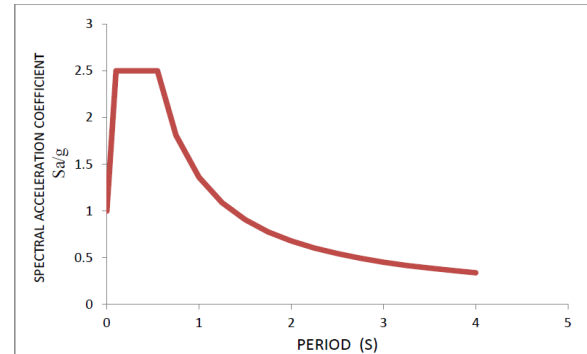


Fig.: Response Spectra for 5% Damping (IS1893:2002)

The total design lateral force or design seismic base shear (V_B) is calculated as per clause 7.5.3 of IS 1893:2002 as under:

$$V_B = A_h w$$

Where, A_h is design horizontal acceleration spectrum value calculated by using T_a and S_a/g values. And w is the total seismic weight of the structure which is taken equal to the sum of the dead load and 25% of the live load of the all floors of the building. Vertical distribution of the base shear to different floors is done according to the clause 7.7.1 of the IS 1893:2002, expression for the same is as under:

$$Q_i = \frac{W_i h_i^2}{\sum_{j=1}^n W_j h_j^2}$$

Where Q_i the design lateral force at floor i , W_i seismic weight of the i th floor, h_i is the height of the i th floor from the base, and n is the number of storeys in the building.

Response spectrum analysis

The basis of engineering seismology is the need to quantify how a given structure will respond to complex ground motions. The structure's response is determined by its mass and stiffness distributions. For example, stiff buildings will experience low accelerations relative to the ground. Tall buildings tend to accelerate away from ground motions, resulting in low absolute accelerations, where absolute acceleration is the sum of the building's movement relative to the ground and the ground acceleration.

The response spectrum method (RSM) was introduced in 1932 in the doctoral dissertation of Maurice Anthony Biot at Caltech. It is an approach to finding earthquake response of structures using waves and vibration mode shapes. The concept of the “response spectrum” was applied in design requirements in the mid-20th century in building codes of various countries. The computational advantages in using the response spectrum method of seismic analysis are the prediction of displacements and member forces in structural systems. The method involves the calculation of only the maximum values of the displacements and member forces in each mode using smooth design spectra that are the average of several earthquake motions. The present project uses the response spectrum method to calculate the values of member forces and moments.

E. Load Combination

A load combination results when more than one load type acts on the structure. Design codes usually specify a variety of load combinations together with load factors (weightings) for each load type in order to ensure the safety of the structure under different maximum expected loading scenarios. For example, in design a staircase, a dead load factor may be 1.2 times the weight of the structure, and a live load factor may be 1.6 times the maximum expected live load. These two “factored loads” are combined to determine the required strength of the staircase.

In the limit state design of this RC building model the following load combinations are considered as per codal provisions provided in Clause 6.3.1.2, IS: 1893-2002 (Part 1):

- a) $1.5(DL + IL)$
- b) $1.2(DL + IL \pm EL)$
- c) $1.5(DL \pm EL)$
- d) $0.9DL \pm 1.5EL$

III. RESULTS

The fundamental time period of vibrations for different models having geometrical irregularity at different floor levels is given as under:

Table 4

Comparative Period of Vibration for Geometrical Irregularity

Mode No.	GIB	GI1	GI2	GI3	GI4	GI5
Mode1	0.62	0.60	0.58	0.58	0.57	0.56
Mode2	0.61	0.59	0.57	0.55	0.52	0.50
Mode3	0.57	0.54	0.50	0.44	0.38	0.32
Mode4	0.13	0.13	0.13	0.13	0.13	0.13
Mode5	0.13	0.12	0.12	0.12	0.12	0.12
Mode6	0.12	0.12	0.12	0.12	0.11	0.11
Mode7	0.12	0.11	0.11	0.11	0.11	0.11
Mode8	0.12	0.11	0.11	0.11	0.11	0.11
Mode9	0.11	0.11	0.11	0.11	0.11	0.10
Mode10	0.11	0.11	0.10	0.10	0.10	0.10
Mode11	0.11	0.10	0.10	0.10	0.09	0.09
Mode 12	0.11	0.10	0.09	0.09	0.09	0.09

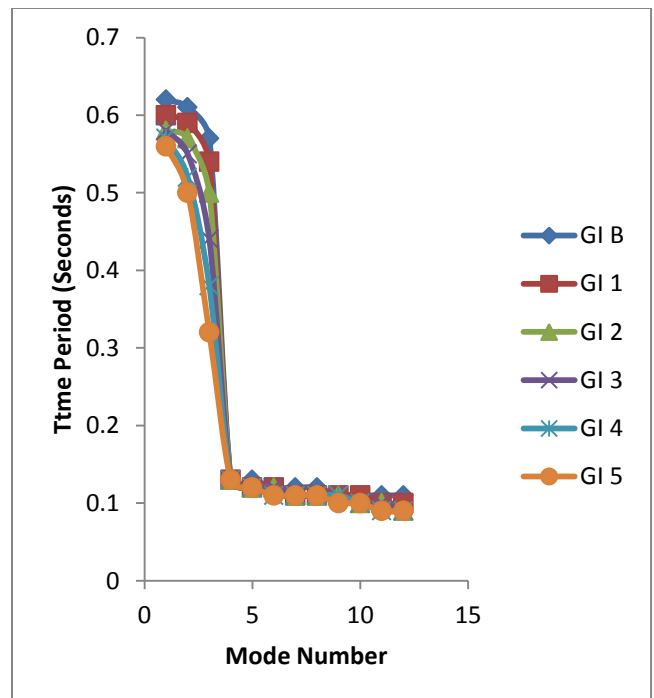


Fig. Comparative Graph for Period of Vibration for Geometrical Irregularity for Various Models

IV. CONCLUSION

The main conclusion obtained from the present study is that for the models having the geometric vertical irregularity at different floor levels fundamental period of vibration is maximum for model GI B. So there are maximum possibilities of collapse.

Acknowledgment

The authors would like to thank Er. Rahul Satbhaiya for the statistical support and the guidance. The author would also like to thank Infinity Management & Engineering College, Sagar for providing the Tools and Technology for the work to be completed.

REFERENCES

- [1] Valmundsson, E.V. and Nau, J.M. (1997), "Seismic Response of Building Frames with Vertical Structural Irregularities", *Journal of Structural Engineering*, ASCE, Vol. 123, No. 1, pp. 30-41. CEN(1998)(ICC,2003).
- [2] Kabeyasawa, T., Sanada, Y. and Kuramoto, H., "Design and Analysis of a Six- Storey RC Frame-Wall System with Soft First Storey for Shaking Table Test", Vol. 35, No. 11, 2006, pp. 1425-1451.
- [3] Andreas.J.Kappos, "Performance-based seismic design of 3D RC buildings using inelastic static and dynamic analysis procedures", *ISSET journal of earthquake technology*, paper no. 444, vol. 41, no. 1, pp. 141-158, 2006.
- [4] Ayidin, K. (2007), "Evaluation of Turkish seismic code for mass irregular buildings", *Indian journal of engineering and material sciences*, Vol.14, pp.220-234.
- [5] Kara, M. E. and Altin, S., "Behavior of Reinforced Concrete Frames with Reinforced Concrete Partial Infills", *ACI Structural journal* Title no. 103-S72, Vol. 103, No. 5, September-October 2006, pp. 701-709.
- [6] IS 1893 Part 1 (2002), "Indian Standard Criteria for Earthquake Resistant Design of Structures", Bureau of Indian Standards, New Delhi.
- [7] Saraswati S., Vineet S. (2012), "Seismic Response of RCC Building with Soft Storey", *International journal of applied engineering research*, vol.7 no.11.
- [8] Kadid.A, "Pushover analysis of reinforced concrete frame structures", *Asian journal of civil engineering (building and housing)* vol. 9, no.1, pages 75-83, 2008.
- [9] ATC-40, "Seismic Evaluation and Retrofit of Concrete Buildings", Applied Technology Council, Seismic Safety Commission, Redwood City, California, Volume 1&2, 1996.
- [10] Birajdar.B.G, "Seismic analysis of buildings resting on sloping ground", 13th World Conference on Earthquake Engineering, Vancouver, B.C., Canada, Paper No. 1472, 2004.
- [11] Kumar Manoj and Babu Venkata G, "Comparative Study of Seismic Performance of Building Having Mass Vertical Irregularity at Different Floor Levels", *International Journal of Science and Research (IJSR)*, Volume 5 Issue 1 January 2016, pp-896-899.